



The Marker



FLOW CONTRACT SITE
LABORATORY

FCS Laboratory Quarterly Newsletter

Second Quarter 2011

Issue 3

Inside this issue:

- A Novel Stimulation Assay using Cyto-Chex® BCT Tubes 1
- Upcoming Events 1
- FCS Laboratory Second Quarter 2011 Update 1
- Spring Fun in Kirkland, WA 1

Events 2011:

- ◆ International Clinical Cytometry Society Meeting, October 14—18, Portland, OR
- ◆ AAPS Annual Meeting and Exposition, October 23—27, Washington, DC
- ◆ American College of Toxicology Meeting, November 6—9, Phoenix, AZ

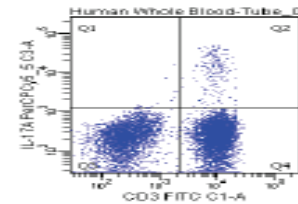


A Novel Stimulation Assay using Cyto-Chex® BCT Tubes

By: Lynette Brown, MS, CHT, Jennifer J Stewart, PhD

The Cyto-Chex® BCT tubes from Streck Laboratories contain a priority fixative that stabilizes the blood at room temperature making flow cytometry analysis possible for up to one—two weeks after collection. This application has been advantageous for doctors and scientists in remote locations being able to transport specimens back to a testing lab that is not in close proximity to the draw site. These BCT tubes have also become very popular for use in clinical research trials for flow cytometry testing since humans are drawn from multiple sites and then the specimens are shipped to a central laboratory. One disadvantage of the tube is that since it contains a fixative, flow cytometry applications which require stimulation cannot be performed once the specimen is exposed to the fixative.

At FCS Laboratory our scientists are working on ways to stimulate the specimen prior to placing in the Cyto-Chex® BCT tube. Below is a figure from the one method we have employed which measures the intracellular cytokine IL-17A expressed in T cells up to five days post-stimulation



Please look for more information on this assay within the next few months. Our goal is to present this application in a poster session at a clinical meeting. Questions? Email: info@fcslaboratory.com

FCS Laboratory Second Quarter 2011 Updates

- * Completion of human whole blood validation for surface and intracellular markers in Cyto-Chex® BCT tubes.
- * Please see our service listings on [As-say Depot](#), "The world's largest online marketplace for pharmaceutical research services"
- * FCS Laboratory has also established a relationship with [Chromocyte](#), "A FREE consolidated resource for flow cytometry antibody and cell-based assay products, knowledge and services."
- * To kick off these new marketing campaigns please go to our [website](#) and enter to win a \$100 Visa gift card.



Summer Fun in Juanita/Kirkland (www.explorekirkland.com)

- * Kirkland Uncorked. July 15-17. Wine, Dine and Design on the Kirkland waterfront.
- * Kirkland Summer Concert Series, at Marian Park, July 5-August 25.
- * Carillon Point Movie Nights, July 23 Feature: "Despicable Me"



13029 NE 126th PL
Kirkland, WA 98034
Phone: 425-821-3900
Fax: 425-821-3925
Email: info@fcslaboratory.com

We're on the Web!

