



**Inside this issue:**

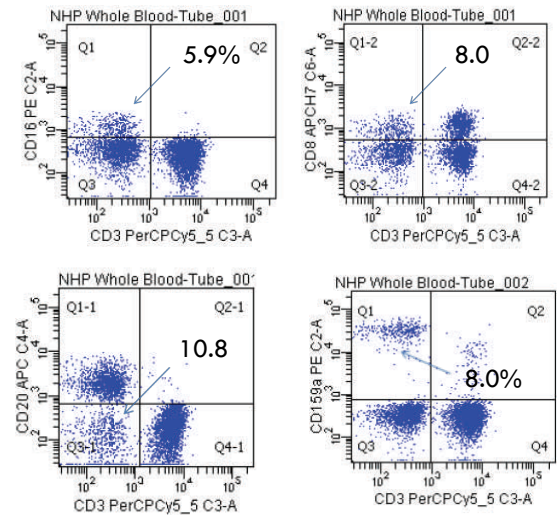
- Defining Natural Killer Cells in Non Human Primate 1
- Upcoming Events 1
- FCS Laboratory Third Quarter 2012 Updates 1
- Fall Fun in Washington 1

### Defining Natural Killer Cells in Non Human Primates

By: Lynette Brown, MS, CHT and Jennifer J Stewart, PhD

The definition of NK cells in non human primates by flow cytometry is most common identified as CD3-CD16+. Since the CD16+ marker can be of low intensity on the cell surface and measure the soluble excreted form, at times this marker is hard to delineate. Other definitions of NK cells that have been used are CD3-CD20- (lymphocytes devoid of T cell and B cell surface antigens), CD3-CD8+ and CD3-CD159a+. At FCS Laboratory we are qualifying these definitions. Preliminary data shows that both CD3-CD16+ and CD3-CD8+ cells are low intensity and the marker may be hard to delineate from the negative cells. CD3-CD20- cells can contain immature cells so the relative percent may be increased. CD3-CD159a+ plot shows a high intensity staining, easy to gate and similar percentages to the CD3-

CD8+ cells. CD3-CD16+ percent is lower possibly due to receptor dynamics. FCS Laboratory continues to qualifying these populations in-house. For more information please contact us.



#### Upcoming Events:

- NW Summit on Immunological Models in NHP, November 05, 2012, Seattle
- Annual AAPS Meeting Chicago, November 2012
- National Biotech Conference/ISAC, May 2013 San Diego

### FCS Laboratory Third Quarter 2012 Updates

- We are pleased to announce the addition of a BD FACSVantage™ flow cytometer and cell sorter to our equipment repertoire. We hope to have the system up and running by fourth quarter. This new instrument provides up to 8-color testing and sorting capabilities. Please inquire!
- Please check out our FCS Laboratory flyer on-line which gives more details on the antibody markers and panels we offer.
- The AAPS PharmaFlow flow cytometry committee has created a new group on LinkedIn, [Flow Cytometry Action Program Committee](#). Please join the discussions today!
- Please stay tuned for more details on next year's AAPS National Biotech Conference and ISAC meeting. Topics to include receptor occupancy and flow cytometry in regulated environments (GLP/GMP/CLIA).

### Fall Fun in Washington

- Enjoy the fall corn maze at [Stockers Farm](#) in Snohomish Washington. Open end of September through October.
- In November Seattle hold's a [Macy's Parade](#) the day after Thanksgiving. Come enjoy the parade and then hit [Westlake Center](#) for some holiday shopping.
- The [Christmas Ship Festival](#) docks in Juanita December 16th. Enjoy the music and parade of lights which is displayed every year.



13029 NE 126th PL  
Kirkland, WA 98034  
Phone: 425-821-3900  
Fax: 425-821-3925  
Email: [info@fcslaboratory.com](mailto:info@fcslaboratory.com)



We're on the Web!

New: You can now find us on [Science Exchange](#)

