



Inside this issue:

- Commercial Controls for Flow Cytometry 1
- Upcoming Events 1
- FCS Laboratory Fourth Quarter 2012 Updates 1
- Winter Fun in Washington 1

Upcoming Events:

- ◆ Society of Toxicology Annual Meeting, San Antonio, TX, March 2013
- ◆ AAPS National Biotech Conference, May 2013 San Diego
- ◆ ISAC, May 2013 San Diego

Commercial Controls for Flow Cytometry

By: Lynette Brown, MS, CHT and Jennifer J Stewart, PhD

The use of controls in flow cytometry assays can be difficult. There are a few commercial controls available that supply reference ranges for many surface antibody markers. For intracellular markers it is more difficult to find. Companies such as BD, have HICK cells which are good controls for cytokines such as IFN γ , TNF α and IL-2. Recently Streck has promoted a new control CD Chex Select which offers a control for intracellular marker myeloperoxidase (MPO). The figure to the right shows staining of CD Chex Select for MPO on granulocytes. This control offers reference ranges for other human surface markers too. What will be next?

Do you have any topics you would like to discuss? Additional Flow Cytometry controls? Compensation? Receptor Occupancy? Phosphorylation Assays? Join our group on LinkedIn and start a discussion today.

http://www.linkedin.com/groups?gid=4566504&trk=myg_ugrp_ovr

FCS Laboratory Fourth Quarter 2012 Updates

* Jennifer will be chairing a workshop at this year's ISAC meeting in San Diego in May. The session will be on flow cytometry in regulated environments (GLP/GMP/CLIA). In addition, there will also be a session on receptor occupancy.

* The concurrent AAPS National Biotech Conference will feature an encore presentation of the receptor occupancy session. Do not miss out! More details to follow next quarter.

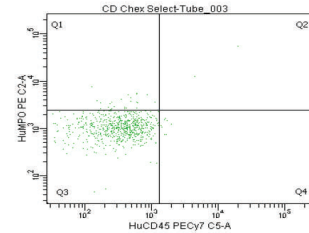


Figure 1: Negative staining

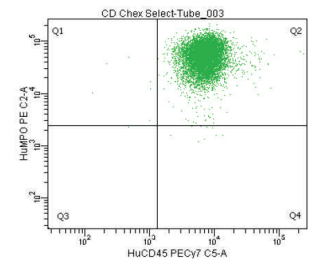


Figure 2: Positive staining for MPO on Granulocytes

Winter Fun in Washington

- * Enjoy fun skiing and snowboarding on the slopes! A few are Baker, Snoqualmie and Stevens. Visit www.skiwashington.com for more information.



13029 NE 126th PL
Kirkland, WA 98034
Phone: 425-821-3900
Fax: 425-821-3925
Email: info@fcslaboratory.com



We're on the Web!

New: You can now find us on [Science Exchange](#)

